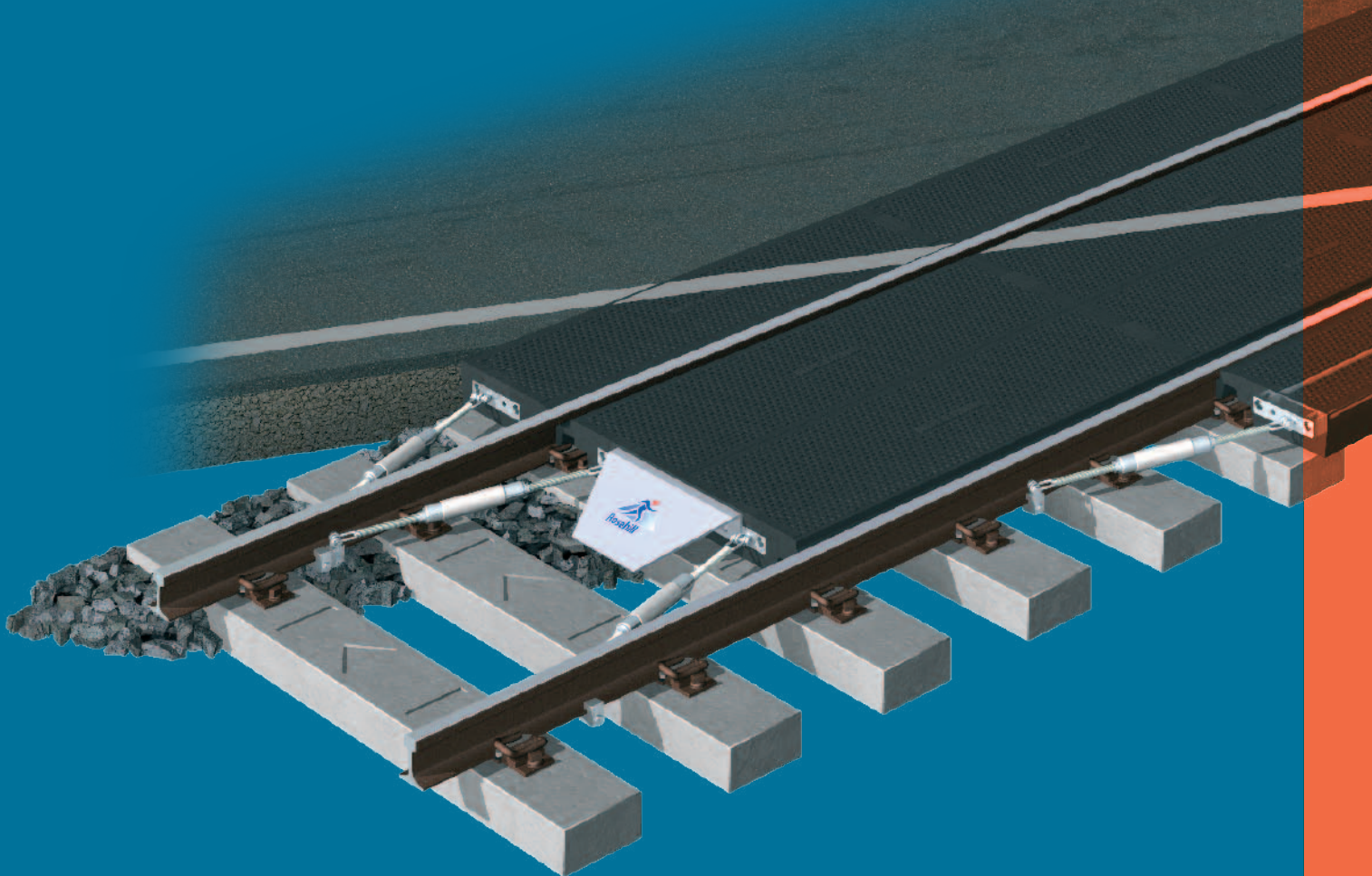




Rosehill Rail



THE COMPLETE RAIL CROSSING SOLUTION



PROVEN ENGINEERING EXCELLENCE

Rosehill Rail Working At The Heart of the Rail Industry

» **Rosehill rubber rail crossings have been an integral part of the Rail Industry for over 15 years.**

The Rosehill team is dedicated to meeting rail customers' needs by providing a service that operates on a global basis. Based in Sowerby Bridge, we are the largest designer and manufacturer of rubber rail crossing systems in the UK.

The support and service offered by Rosehill Rail is backed up by over 30 years experience in polyurethane and rubber technology.

- Rosehill operates a quality assurance system complying with the International Standard ISO9001:2008, which is audited annually by NQA (National Quality Assurance).
- Panels are designed to fit each bespoke crossing permutation of Gauge, Rail, Sleeper and Fastener type on sleepers at 600mm centres.
- Each panel is marked when moulded so it can be clearly read from above, the identification comprises of:
 - Crossing grade
 - Rail Type
 - Sleeper Type
 - Fastener type
 - Year of manufacturer
 for example: ROAD UIC60 B70 SKL14 2011
- Traceability is achieved by recording on computer, production data, weight and visual check of each panel at the time of manufacture. Each panel can be traced to the order and manufacturing batch. This enables checking against the engineering drawings should the need arise at a later date.



Rosehill has amassed a wealth of experience during their long history in the Rail Industry, working with a range of global Rail Infrastructure Companies and Operators on a wide variety of projects. The knowledge and experience gained has enabled us to provide crossing solutions that are perfectly tailored to any requirement.

Each of the rubber panel types have their own characteristics and are designed specifically for a defined end use.

- Significant cost benefits are achieved by quick installation, reducing track possession time.
- Easy to maintain with minimal maintenance - all of our panels are strong, robust and dependable.
- Rosehill Rail Crossing Panels do not pose any risk to the environment. They are manufactured from re-cycled rubber tyres and bonded together with an advanced polyurethane binder using a revolutionary unique cold-cure manufacturing process. Once the manufacturing process is complete the panels will not react with soil, or water and will not leach chemicals into the environment, or emit any harmful vapours, or odours into the atmosphere.
- Design Rights - All components in our level crossing systems are designed by Rosehill Rail (a Division of Rosehill Polymers Limited), including those supplied under other names by our global distributors.
- Delivering excellent customer service – every time.



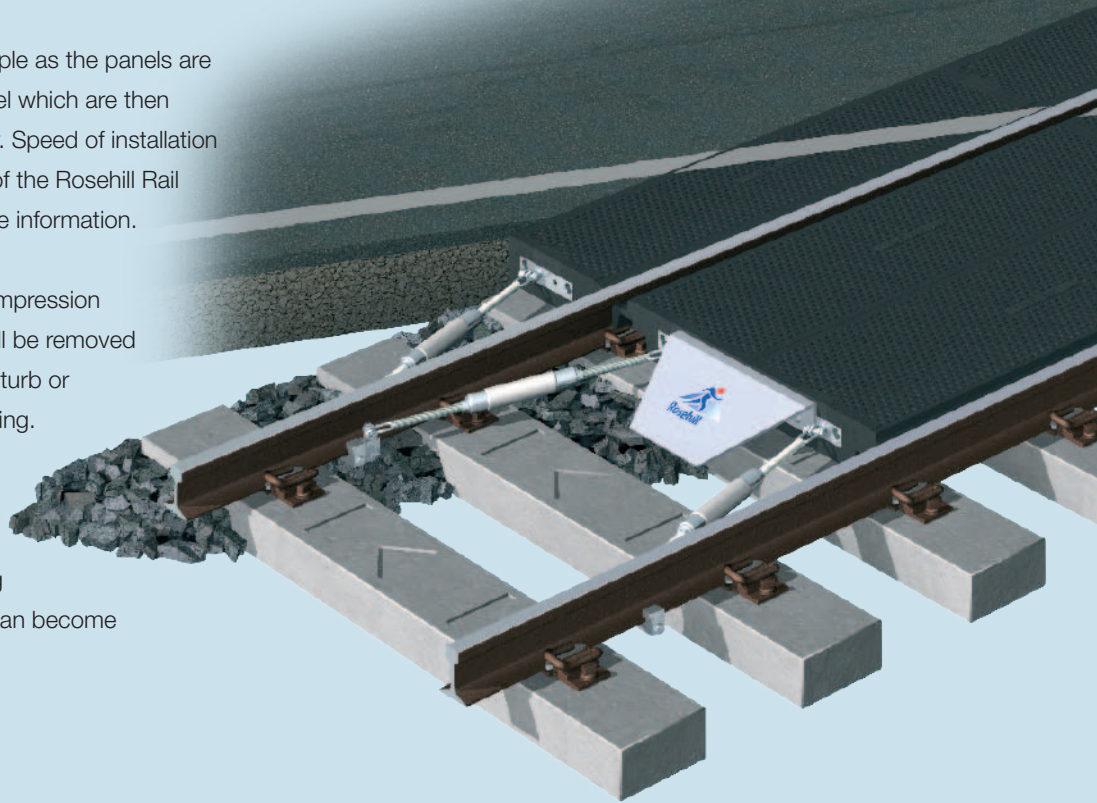
Rosehill Rail

Rodded Panel System

Providing dimensional stability at any angle
in all operating conditions

» ADVANTAGES

- The installation is very quick and simple as the panels are connected by just two bolts per panel which are then covered with rubber blocks for safety. Speed of installation can be further improved by the use of the Rosehill Rail safe lifting pins, see page 11 for more information.
- Even though each panel is under compression whilst insitu, individual panels can still be removed and replaced without the need to disturb or dismantle the remainder of the crossing.
- When the manufacturers installation instructions are followed correctly, the entire crossing is held in one matrix and no panels can become accidentally dislodged.



» This innovative product has been designed to provide lateral and vertical retention, dimensional stability, and combat compressive set from heavy traffic.

» The panels are connected by two bolts protected by rubber cover plates

» FEATURES

- Each individual panel is manufactured over length and by means of rods moulded within the panels is compressed down to 1.8 metres long and held under compression during its lifespan.
- This ensures dimensional stability **in all conditions** and combats compressive set which can occur from concentrated often high speed traffic, particularly at crossings at a very acute angle. Over an extended period compressive set can result in distortion and gapping which this new system avoids.
- The crossing panels can be manufactured for wide, standard or narrow gauge. This system can be used in any situation but is particularly useful for very long crossings or those at an acute angle to the road.



To view the Rodded System installation and maintenance videos, visit www.rosehillrail.com

Rosehill **Safe** Lifting Pins

- Tested to a safe working load of 350kg, each set of lifting pins is supplied with appropriate LOLER certification. Rosehill Safe Lifting Pins can be used to lift individual panels, or two sets can be used in tandem, to lift both gauge panels together for even faster installation, or removal.

To view videos of the Rosehill Safe Lifting Pins in use, please visit www.rosehillrail.com



Anti-Trespass Panels

- » **Rosehill Anti-Trespass panels are designed to deter animals, pedestrians, or metal thieves from accessing the track.**

They will fit any standard gauge rail and sleeper, are easily installed and cannot be accidentally displaced as they fit under the rail and form a complete matrix across the track.

They can be cut to fit if necessary and can be removed for tamping and replaced without damage.

Such is the effectiveness of our Anti-Trespass panels, that they are increasingly being used on platform ends at stations.





Rosehill Rail

ROSEHILL RUBBER RAIL CROSSING PANELS

» ROSEHILL RAIL SALES

Spring Bank Mills
Watson Mill Lane
Sowerby Bridge
West Yorkshire HX6 3BW
United Kingdom

Phone +44 (0)1422 839 456
Fax +44 (0)1422 316 952
Email info@rosehillrail.com
Web www.rosehillrail.com
www.rosehillpolymers.com

All information is correct at time of going to press.

© Rosehill Polymers Limited - 2012.



Rosehill Rail is a Division
of the Rosehill Polymers Group



CERT NO. 2179